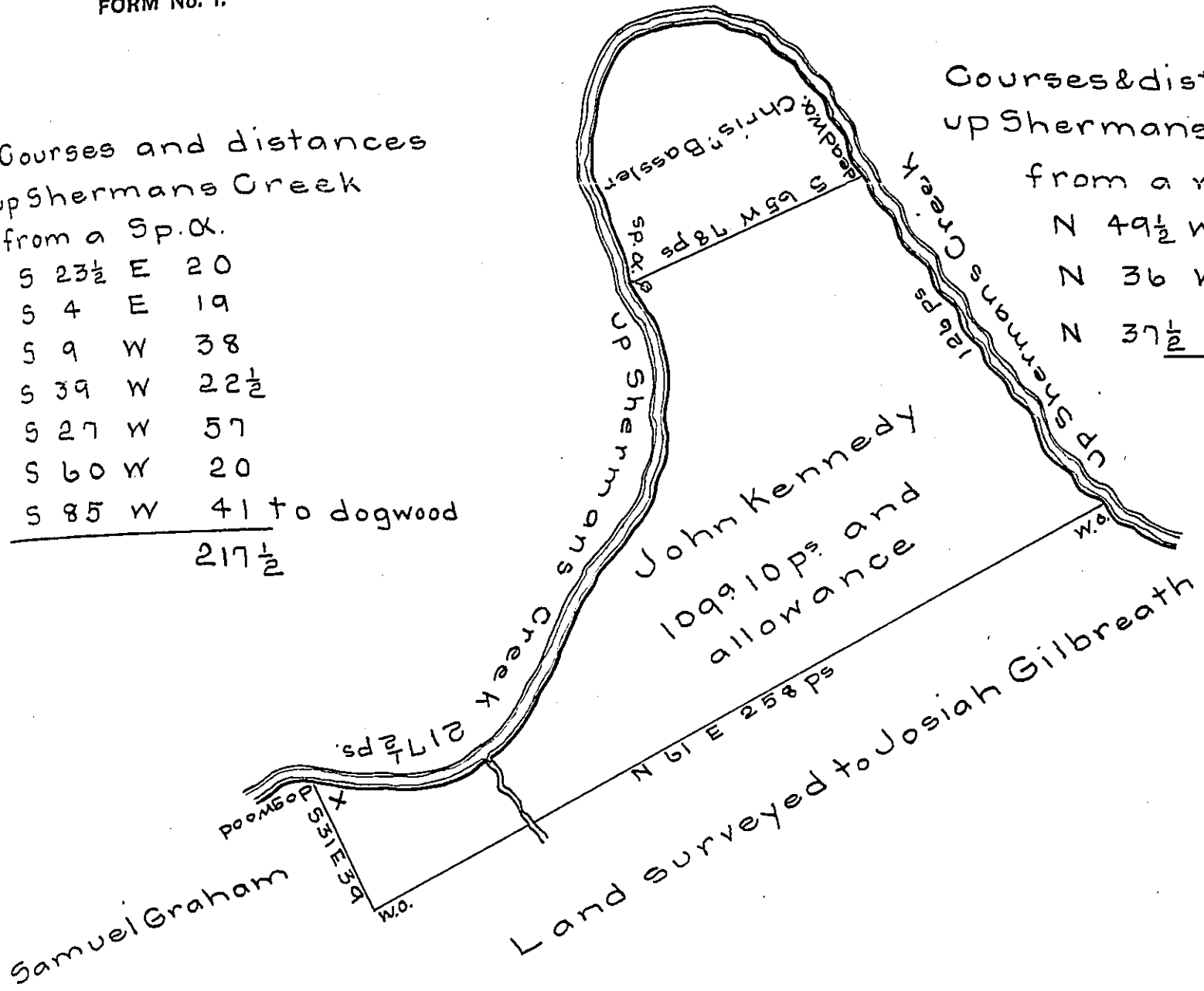


Courses and distances
up Shermans Creek
from a Sp. α.

S 23½ E	20
S 4 E	19
S 9 W	38
S 39 W	22½
S 27 W	57
S 60 W	20
S 85 W	41 to dogwood
<hr/>	
	217½

Courses & distances
up Shermans Creek
from a w. α

N 49½ W	16
N 36 W	12
N 37½ W	98 dead w. α.
<hr/>	
	126 p



A draught of a tract of land situate in Rye township Cumberland County containing 1099 10 ps and the allowance of six p cent for for roads & It being part of a larger tract of 2039 and allowance surveyed to John Kennedy in pursuance of an application dated the 10th day of October 1766 N° 1506. Resurveyed and struck off the 28th day of August 1807.

To Saml Cochran Esqr

S.G.

Wm Wheeler D.S.

IN TESTIMONY that the above is a copy of the original remaining on file in the Department of Internal Affairs of Pennsylvania, made conformably to an Act of Assembly approved the 16th day of February, 1833, I have hereunto set my Hand and caused the Seal of said Department to be affixed at Harrisburg, this fourth day of October 1905

[Signature]
Secretary of Internal Affairs.